

The background of the entire page is a photograph of the rear of a white Lewiston ambulance. The ambulance features black and red chevron patterns on the sides and rear. The back doors are white with two windows and the words 'LEWISTON' and 'AMBULANCE' in large, bold, red-outlined letters. The Minnesota license plate '11039IT' is visible at the bottom center.

# ***LEWISTON AMBULANCE***

## ***2022 ANNUAL REPORT***

**ONE MISSION. ONE TEAM**

## 2022 Statistics

The Lewiston Ambulance finished 2022 with 454 total incidents. Contact was made with 377 patients, the remainder we either found no patient, were cancelled prior to our arrival, or we were on standby only. 2022 was the busiest year in the 48 year history of our department. Normal call volume is between 225-250 incidents per year. Many statistical records were set due to our unique position within Winona County and staffing struggles within rural EMS.

185 of the 454 incidents were mutual aid requests, and from the time of dispatch until completion of the run volunteers were gone an average of one hour and forty-eight minutes (1:48). In most instances we responded to the scene emergent with lights and sirens, but were able to leave the scene non-emergent without lights and sirens. We made contact with 159 female patients and 218 male patients with the average age being 63 years old. We were dispatched for multiple reasons. The top 3 dispatch reasons were falls (106), sick person (78), and traffic crashes (38).

Patients were transported to numerous hospitals in our area. 117 patients were transported to Winona Health, 121 to St. Mary's-Rochester, 29 to Gundersen Lutheran-La Crosse, 7 to Olmsted Medical Center-Rochester, and 4 to MCHS- La Crosse; the others either refused transport or required no treatment. Advanced Life Support was required for 28 patients. 23 patients's required a ground ALS Intercept from either Winona, Tri-State or Mayo Clinic Ambulance. 5 patient's were flown by Mayo One Helicopter.

The summary of calls by shift showed 54% of our calls during the daytime hours of Monday through Friday (6am-6pm), 29% on the weekends, and 17% during the evening.



Our membership currently consists of 1 Paramedic, 24 Emergency Medical Technicians, and 6 Emergency Medical Responders. Our team continues to be strong and committed. We continue to actively recruit and share our story with the public. We currently have 10 members who serve on both the Ambulance & Fire Dept, and we are proud of the relationship between the services. We also have 7 members who do not live near Lewiston. These members stay in our Ambulance Office for 12 or 24 hour shifts when taking call time. Over 23,000 hours of "call time" were provided by our members in 2022. This does not include the hours spent teaching, training, attending meetings, or staffing our 2<sup>nd</sup> Truck.



## Training Program continues to Strive

Our education program continued to be a success in 2022. We conducted an Emergency Medical Responder (EMR) course at our local high school during the 4<sup>th</sup> Quarter. This class has been taught since 2012. Our primary goal is to connect with students and make them realize how important it is to volunteer in their local community whether that be in EMS or any volunteer opportunity. There were 20 students who completed our class with 6 students going above and beyond to obtain their State of MN EMR certification. We also conducted an EMR course for the public and certified 7 people. We had 3 WSU Law Enforcement students, 2 SC Ambulance members, 1 Hidden Valley FR and 1 LFD member. Our EMR program is a success due to the members of our Ambulance who commit to teaching classes on top of responding to calls. We also continued to teach CPR & First Aid throughout 2022. We conducted classes at our local school, trained numerous day care providers and provided classes for Good Shepherd Lutheran Nursing Home & Daycare in Rushford. We trained employees at TDI in Stockton, Speltz Assisted Living, and Alliant Castings in Winona.



**2022 EMS Week Theme: “EMS: Rising to the Challenge”**

It has been 2 years since we’ve held an open house during EMS Week due to Covid-19. We were able to have our event again this year and on Sunday May 15<sup>th</sup>, roughly 300 people came out to support our crew. We had a brat/hot dog meal, games for the kids, and the community was able to meet the crew. The weather was great and we appreciated those who were able to attend. We will be planning an open house in 2023 which will be on Sunday May 21<sup>st</sup>.



**Lewiston Ambulance Truck #2 “The Green Machine”**

We found ourselves in a unique position as we started June of 2022. Due to the increase in call volume, we had been using St. Charles Ambulance’s back-up truck since the fall of 2021. Unfortunate circumstances resulted in that truck heading back to St. Charles and left us with no back-up unit. Our new truck continued to be delayed



with an expected arrival of November or December. Our Board of Director’s felt a decision needed to be made to ensure Ambulance coverage for our community. Crew spent the month of June researching a number of options and with the support of our City Council we purchased a used 2010 Ambulance in July at a price of \$40,000. The truck was purchased from PSV in Fergus Falls, MN with 50,000 miles on it. The Ford E-450 has a Horton Box and was very familiar to our crew. We received the truck on 7/08/22 and over the next few weeks we worked to get it ready for service. The truck was placed in service on 7/21/22 and has been a huge asset. Over the next few months crew evaluated whether to keep the 2010 or the current 2008 truck

we were using. Ultimately, the decision was made to keep the 2010 and trade off the 2008 truck. The 2008 Chevy was traded back to the dealer in December for a price of \$15,000.



## **“Lewiston Ambulance Hits the Big Stage!”**

In September our neighbors from Eyota reached out for assistance. Country music star, Luke Bryan, was coming to town for his “Welcome to the Farm” Tour. Eyota Ambulance was tasked with providing EMS coverage for over 20,000 people and were in need of help. Due to having 2 trucks, crew from Lewiston Ambulance was more than willing to assist. 1 unit with 3 crewmembers attended the concert while other members remained in Lewiston and staffed our primary truck for 911 incidents. It was a wonderful opportunity to work with other agencies in the region as well as state officials.



## **New Truck 822 Arrives!**

Christmas came early as the service took delivery of our new truck in October. It was a long awaited arrival after ordering the unit in December of 2020. The new truck is a Chevy Silverado 4500 with a custom Horton Box. Crewmembers spent the month of October training on the new vehicle and learning all the new features. The truck was stocked and ready for service on 11/1/22. The new Ambulance provides numerous safety upgrades for crew including a power load device. It has improved lighting, airbags in the patient compartment, top of the line electrical controls and 4WD. Special thanks to our truck

committee for the 6 months of work they put into obtaining this unit. We also want to thank our Assistant Ambulance Director, Nathan Hedlund, for his leadership and commitment to this project. This truck will serve the Lewiston Community for many years!



### **Lewiston Ambulance collaborates with St. Charles Ambulance**

Staffing rural Ambulances continue to be a struggle across the entire State of MN. This requires services to think outside the box and the City of Lewiston & the City of St. Charles are attempting to lead the charge. On 10/1/22 the City of Lewiston took ownership of the St. Charles Ambulance license with the MN EMSRB. This will allow St. Charles to evaluate and build their service back without any regulatory consequences. It also allows them to operate their ambulance, staffing it when they can, and preserves their own identity. Their volunteers signed on with the City of Lewiston and are now operating under our leadership. Their goal is to restructure and take their license back sometime in the future.



### **Lewiston Ambulance hosts High Fidelity Manikin Training**

On December 3<sup>rd</sup> members of the Lewiston Ambulance & St. Charles Ambulance had the opportunity to train with high-fidelity simulation manikins. The manikins and staff were provided by Gundersen Health Systems, Integrated Center for Education. These manikins provide real life training and cost upwards of \$70,000 apiece. They can talk, breathe, and allow providers to feel for a pulse. Members were put through 3 scenarios which included an OB emergency and live birth, a 5 year old trauma patient and an adult patient with chest pain who later went into cardiac arrest. Teams worked through the scenarios as they would in real life and assessed and treated the complaints. Each scenario included a facilitator who provided their expertise and real-life experience. 3 Paramedics facilitated along with an E.R. Doctor from Mayo Clinic. The opportunity to train and learn from these experienced EMS professionals will only make us better as we strive to provide the best possible care in our communities!





### Lewiston Emergency Services Host Holiday Parade

On December 18<sup>th</sup> members from the Lewiston Ambulance, Lewiston Fire Department, and Lewiston Police Department braved the cold to spread some holiday cheer! This event was organized by Ambulance Member Charayah Nelson and has been a hit within the community. Santa and Mrs. Claus rode through town on the fire truck while the Police Department blasted some holiday music. The grinch attempted to steal the show but was unsuccessful. We are so grateful for the relationship we have with our partners from Lewiston Fire & Lewiston PD!



Lewiston Ambulance has some of the most dedicated volunteers you will find. These men and women volunteer thousands of hours a year to be “on call”, take mandatory and additional training classes, and then respond to calls. The volunteers save the taxpayers roughly \$500,000 every year just in wages. They leave their family at a moment’s notice to help someone else and ask for nothing in return. We are very thankful for all the support the Lewiston City Council, Township Official’s, and the community gives us. We will continue to improve this great service that was started 49 years ago and although we hope you never need us, rest assured we will be there if you do.

Submitted,

Matthew L. Essig  
Ambulance Director  
[ambulance@lewistonmn.org](mailto:ambulance@lewistonmn.org)  
507-523-2982

**Lewiston**  
**\*EMS**  
**One Mission. One Team**

# 2022 INCIDENT STATISTICS

<b>2022 TOTAL AMBULANCE RUNS</b>	<b>454</b>
<b>ACTUAL PATIENT CONTACTS</b>	<b>377</b>
<b>RUNS BY CITY/TOWNSHIP LOCATION</b>	
City of Lewiston	157
City of St. Charles	104
City of Winona	44
City of Stockton	34
Warren Township	29
Fremont Township	22
Utica Township	20
Hillsdale Township	7
St. Charles Township	6
Saratoga Township	6
City of Utica	3
City of Goodview	3
Elba Township	3
City of Rollingstone	3
Norton Township	2
Minnesota City	2
Wilson Township	2
Eyota Concert	2
Hart Township	1
Rollingstone Township	1
City of Altura	1
Mount Vernon Township	1
City of Minneiska	1
<b>PATIENT DEMOGRAPHICS</b>	
Number of Female Patient's	159
Number of Male Patient's	218
<b>Age of Patient's</b>	
Less than 1	2
1-4	9
5-9	1
10-14	3
15-19	10
20-24	6
25-34	18
35-44	18
45-54	33
55-64	63
65-74	80
75-84	65
85-94	54
95+	15

<b>TIME FROM DISPATCH UNTIL EN-ROUTE</b>
Overall: 4.2 Minutes
Day Shift: 3.4 Minutes
Night Shift: 5.6 Minutes
Weekend Shift: 4.8 Minutes

<b>TIME FROM DISPATCH UNTIL ON SCENE (OUR PSA)</b>
Overall: 9.1 Minutes
Day Shift: 7.9 Minutes
Night Shift: 11.4 Minutes
Weekend Shift: 9.4 Minutes

<b>AVG. MINUTES ON SCENE</b>
Overall: 14.6 Minutes
Day Shift: 14.2 Minutes
Night Shift: 16.3 Minutes
Weekend Shift: 14.4 Minutes

<b>AGENCIES RESPONDING WITH US</b>	
Lewiston Police Department	154
St. Charles Fire/Rescue	97
St. Charles Police Department	84
Winona County Sheriff	63
Lewiston Fire/Rescue	42
Minnesota State Patrol	25
Winona Fire/Rescue	24
Stockton First Responders	16
St. Charles Ambulance	8
Winona Ambulance	7
Winona Police Dept.	4
Rollingstone First Responders	4
MN City First Responders	2
Wilson Fire Department	2
Altura Ambulance	1
Goodview First Responders	1
Winona County EM	1
Altura Fire Department	1
Eyota Ambulance	1



## 2022 INCIDENT STATISTICS

PATIENT DESTINATIONS	
St. Mary's Hospital	121
Winona Health	117
Cancelled	62
Treated & Released	51
Gundersen Lutheran, La Crosse	29
Standby Only	15
Refused Care/Transport	13
Refused Transport (AMA)	11
Deceased at Scene	8
Olmsted Medical Center	7
MCHS-La Crosse	4
No Treatment Required	3
Helicopter Transport	5
Treat/Transport by Private Vehicle	2
Referred to PD	2
Funeral Home	1
Rochester Methodist	1
ALS Transported	1
Private Residence	1

ALS INTERCEPTS	
Mayo Clinic Ambulance	10
Winona Ambulance	9
Mayo One Helicopter	5
Tristate Ambulance	4
Gundersen Air Helicopter	0

AVERAGE CALL TIME: 1 HOUR & 48 MINUTES	
Day Shift (Monday- Friday 6am-6pm)	244 Calls
Evening Shift (Monday- Thursday 6pm-6am)	130 Calls
Weekend Shift (Friday 6pm- Monday 6am)	80 Calls

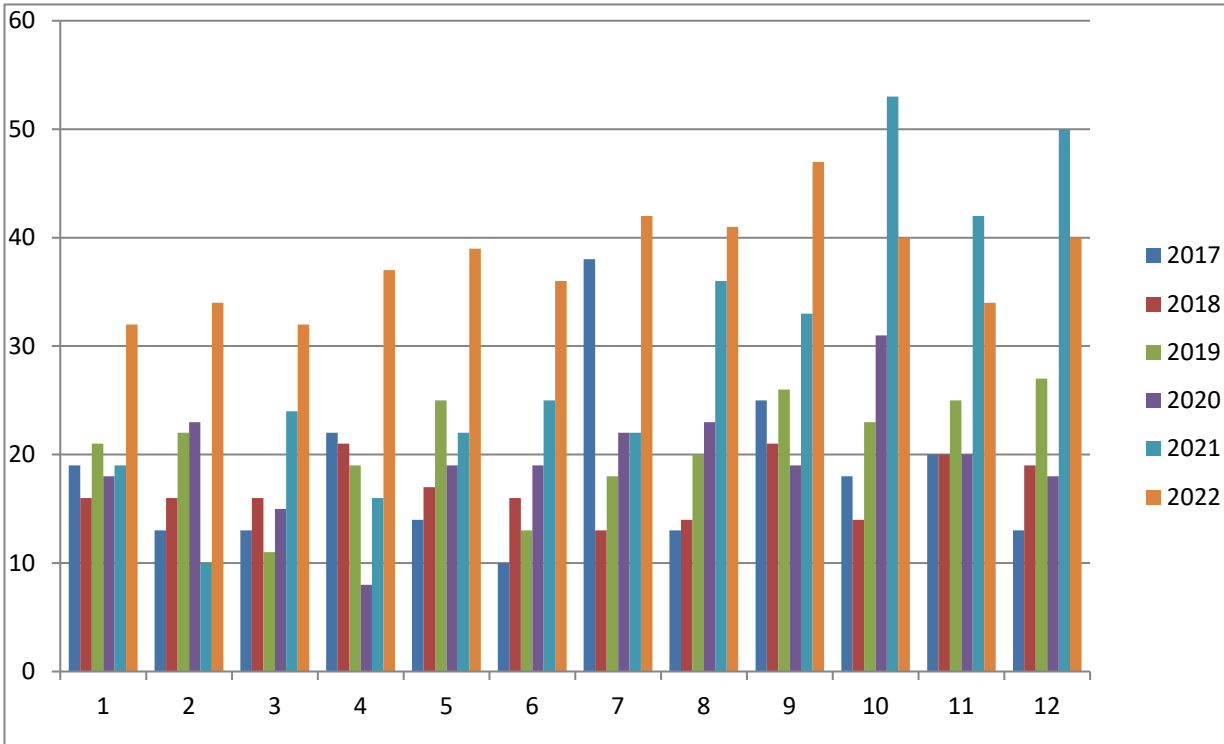
STAFFING CHANGES	
Members on January 1, 2022	26
Members on December 31, 2022	31

DISPATCH REASONS	
Falls	106
Sick Person	78
Traffic/Transportation Incident	38
Breathing Problem	29
Chest Pain (Non-Traumatic)	20
Unknown Problem/Person Down	20
Unconscious/Fainting	20
Abdominal Pain/Problems	16
Stroke	15
Medical Alarm	15
Pain	11
Alcohol Abuse/Withdrawal	10
Back Pain (Non-Traumatic)	8
Psychiatric Problem/Suicide Attempt	8
Traumatic Injury	7
Event Standby	7
Cardiac Arrest/Death	6
Football Standby	5
Heart Problems	5
Well Person Check	4
Medical Transport	4
Convulsions/Seizure	4
Fire Standby	3
Choking	3
Allergic Reaction/Stings	3
Hemorrhage/Laceration	2
Interfacility Transfer	2
Diabetic Problem	1
Overdose/Poisoning/Ingestion	1
Assault/Battery/Abuse Victim	1
Carbon Monoxide Hazmat/Inhalation	1
Heat/Cold Exposure	1

Lewiston Ambulance Report  
01/01/2022-12/31/2022

	2017	2018	2019	2020	2021	2022	Month Avg	Pts
January	19	16	21	18	19	32	20.83	24
February	13	16	22	23	10	34	19.67	31
March	13	16	11	15	24	32	18.50	29
April	22	21	19	8	16	37	20.50	29
May	14	17	25	19	22	39	22.67	29
June	10	16	13	19	25	36	19.83	32
July	38	13	18	22	22	42	25.83	33
August	13	14	20	23	36	41	24.50	34
September	25	21	26	19	33	47	28.50	38
October	18	14	23	31	53	40	29.83	35
November	20	20	25	20	42	34	26.83	27
December	13	19	27	18	50	40	27.83	36
<b>Total Runs</b>	218	203	250	235	352	454		377
<b>Mid Year (June 30th)</b>	91	102	111	102	116	210		
<b>Monthly Avg</b>	18.2	16.9	20.8	19.6	29.3	37.8		

**AMBULANCE RUNS BY MONTH**



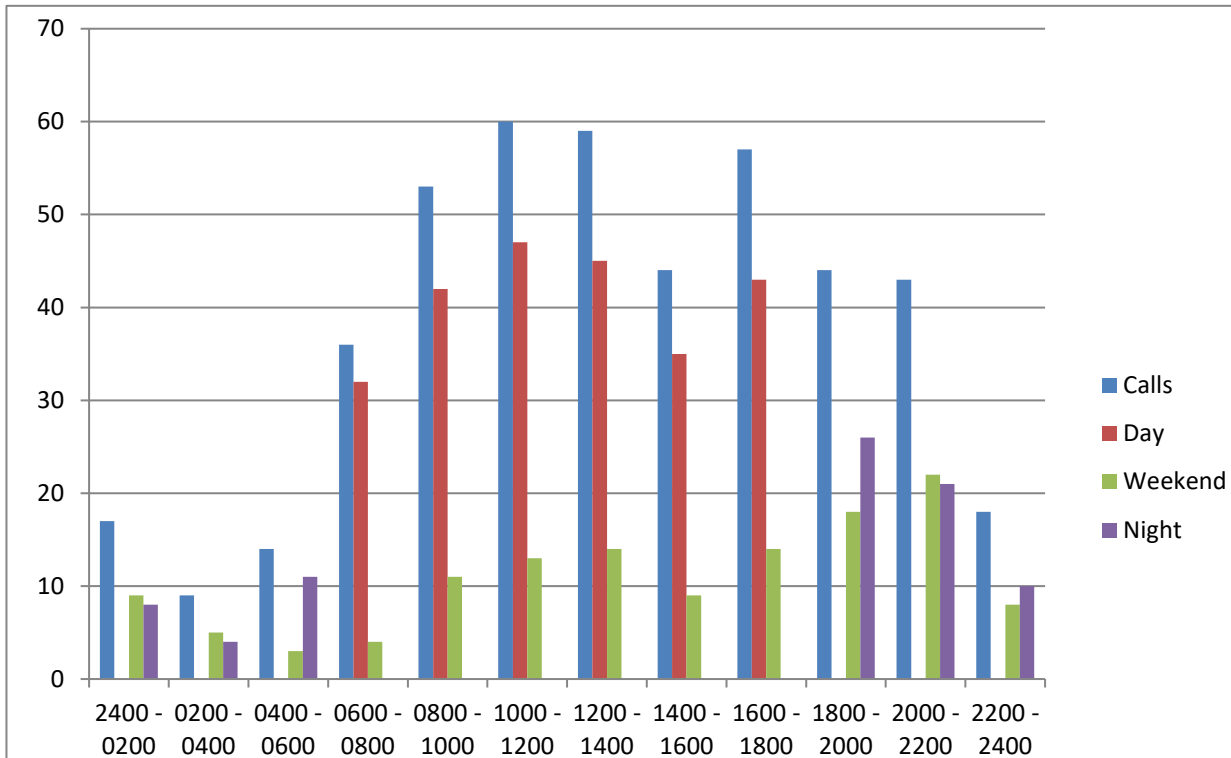


Lewiston Ambulance Report  
01/01/2022-12/31/2022

Times	Calls	Day	Weekend	Night	Pts
2400 - 0200	17		9	8	15
0200 - 0400	9		5	4	7
0400 - 0600	14		3	11	12
0600 - 0800	36	32	4		28
0800 - 1000	53	42	11		39
1000 - 1200	60	47	13		47
1200 - 1400	59	45	14		50
1400 - 1600	44	35	9		31
1600 - 1800	57	43	14		40
1800 - 2000	44		18	26	32
2000 - 2200	43		22	21	33
2200 - 2400	18		8	10	16
	<b>454</b>	<b>244</b>	<b>130</b>	<b>80</b>	<b>350</b>

**54% of Calls During Day**  
**29% of Calls During Weekend**  
**17% of Calls During Night**

## CALLS BY TIME



**Lewiston Ambulance Truck #2 Annual Report**

<b>2022</b>	<b># of applicable calls</b>	<b># of times 2nd truck was available</b>	<b>Staffing rate</b>	<b>2nd truck dispatched</b>
January	28	25	89%	4
February	30	20	67%	0
March	28	18	64%	3
April	30	24	80%	3
May	38	21	55%	0
June	N/A	N/A	N/A	N/A
July	14	10	71%	1
August	34	24	71%	4
September	36	31	86%	4
October	32	25	78%	0
November	28	20	71%	1
December	28	20	71%	2
<b>Total # of applicable runs</b>	326	238	73%	22

**Total Patients Transported by Truck #2=17 + 1 Pt. flown by Helicopter**

**2022 Notes:**

April - Both trucks staffed for Fool's Five event

June 1- July 21 - No 2nd truck available, truck was returned to St. Charles Ambulance

Truck #810 Purchased on 7/7 and put into service on 7/21 @ 9AM

September - 2nd truck provided event coverage in Eyota, transported 1 patient

Altura Ambulance handled 1 incident in May due to 1st truck being on incident & No 2nd Truck Staff

**2nd Truck Staffing Rate: 73%**





# FINANCIAL REPORTS

<u>Code</u>	<u>EXPENSE</u>	<u>2022 Budget</u>	<u>2022 Actual (not audited)</u>	<u>2023 Budget</u>
101	Full Time Employee	\$ 64,116.83	\$ 64,116.78	\$ 71,226.09
103	Part-Time EMT/Admin Assist	\$ 18,000.00	\$ 16,678.40	\$ 24,701.04
110	Volunteer Payroll	\$ 46,500.00	\$ 49,891.75	\$ 62,000.00
121	PERA	\$ 6,158.76	\$ 6,084.79	\$ 7,194.53
122	FICA	\$ 7,974.24	\$ 8,105.23	\$ 9,791.48
126	Medicare	\$ 1,864.94	\$ 1,897.71	\$ 2,289.95
131	Employ Pd Health	\$ 10,693.20	\$ 15,129.05	\$ 14,339.38
151	Worker Compensation	\$ 5,652.51	\$ 7,217.43	\$ 8,300.04
154	Safety Training &Supplies	\$ -	\$ 16.97	\$ -
155	Uniform Expense	\$ 3,800.00	\$ 4,870.23	\$ 4,000.00
200	Office Supplies	\$ 300.00	\$ 188.07	\$ 300.00
210	Operating Supplies	\$ 6,500.00	\$ 14,063.55	\$ 7,200.00
212	Motor Fuels	\$ 4,000.00	\$ 10,991.64	\$ 7,000.00
214	Oxygen	\$ 1,300.00	\$ 1,368.43	\$ 1,500.00
220	Repair & Maint. Supplies	\$ 350.00	\$ 2,163.27	\$ 500.00
250	Merchandise Resale	\$ -	\$ -	\$ -
301	Audit and Accounting	\$ 725.00	\$ 789.33	\$ 955.00
315	Outside Services	\$ 8,000.00	\$ 9,605.84	\$ 9,000.00
317	Advanced Life Support	\$ 3,000.00	\$ 5,595.54	\$ 5,000.00
320	Communication	\$ 1,600.00	\$ 2,107.43	\$ 2,800.00
331	Conferences & Training	\$ 7,500.00	\$ 12,101.69	\$ 8,000.00
351	Publishing & Printing	\$ -	\$ 198.63	\$ -
361	General Liability Insurance	\$ 350.00	\$ -	\$ -
362	Property Insurance	\$ 25.00	\$ 22.00	\$ 25.00
363	Auto Insurance	\$ 1,300.00	\$ 675.00	\$ 1,000.00
380	Utility Service	\$ 2,000.00	\$ 1,330.83	\$ 2,200.00
400	Repair/Maint.	\$ 4,000.00	\$ 5,851.26	\$ 4,500.00
410	Rentals	\$ 325.00	\$ 208.00	\$ 350.00
425	Uncollectible Accou	\$ -	\$ -	\$ -
430	Miscellaneous	\$ -	\$ 3,061.00	\$ -
433	Dues and Subscriptions	\$ 400.00	\$ 522.77	\$ 400.00
437	Refunds and Reimb	\$ -	\$ 780.00	\$ -
438	Licenses, Permits	\$ 600.00	\$ 545.25	\$ -
550	Motor Vehicles	\$ -	\$ 249,229.00	\$ -
570	Office Equip and Furnishings	\$ -	\$ -	\$ -
580	Other Equipment	\$ -	\$ 1,130.76	\$ -
581	Communications Equipment	\$ 1,000.00	\$ 1,941.60	\$ 1,000.00
	<b>TOTALS</b>	<b>\$208,035.48</b>	<b>\$ 498,479.23</b>	<b>\$ 255,572.51</b>

# FINANCIAL REPORTS

Code	REVENUE	2022 Budget	2022 Actual (not audited)	2023 Budget
31010	Lewiston Property Tax	\$ 61,011.48	\$ 61,356.76	\$ 66,817.11
31020	Delinquent Property Tax	\$ -	\$ -	\$ -
33400	State Pays/Grants/Aids	\$ 2,575.00	\$ 4,225.00	\$ 3,950.00
34205	Run Revenue	\$ 110,500.00	\$ 195,615.47	\$ 150,000.00
34206	Township Contracts	\$ 23,449.00	\$ 24,305.40	\$ 24,305.40
34209	Training Program Rev.	\$ 10,000.00	\$ 10,405.00	\$ 10,000.00
36200	Mis. Revenue	\$ -	\$ 4,650.52	\$ -
36210	Interest	\$ 500.00	\$ 77.89	\$ 500.00
36201	Refunds & Reimburse	\$ -	\$ -	\$ -
36230	Donations	\$ -	\$ 50.00	\$ -
	<b>TOTALS</b>	<b>\$ 208,035.48</b>	<b>\$ 300,686.04</b>	<b>\$ 255,572.51</b>

Checking	\$112,024.55
MM Unassigned	\$2,530.52
MM Building	\$90,094.73
MM Truck	\$20,951.79
Total:	\$225,601.59

UPCOMING PROJECTS	
Building Project	Unknown??, Millions
Cardiac Monitors	\$80,000-\$90,000
Stretcher for Truck 2	\$25,000
Lucas Device	\$20,000
Truck 2 Replacement	5 years look at used market
Quick Response Vehcile	Look @ replacement in 1-3 years



**2022 CALL REPORT**

Name	Total Calls
BAMBENEK	42
CHAMBERLIN	1
COREY	38
DAHL	46
DUNCANSON	113
ESSIG, E.	TRAINING
ESSIG, M.	94
FRANZEN, A.	58
FRANZEN, R.	32
FREDBERG	66
GREEN-KRONEBUSCH	TRAINING/1
HAINES	16
HEDLUND	24
JONES	44
JONSGAARD	120
KRISKE	6
LOFTUS	3
MARXHAUSEN	7
MELBOSTAD	25
MOTE	22
NELSON, C.	101
NELSON, T.	102
PETERSON	39
POPE	14
RANDALL	9
SCHELL	70
SMITH	62
STEPHENS	10
WARREN	5
WIRT	26
ZIEBELL	31

**2022 "On Call Hours"**

Name	Total Hours
BAMBENEK	1073
CHAMBERLIN	30
COREY	710
DAHL	1376
DUNCANSON	1821.75
ESSIG, E.	TRAINING
ESSIG, M.	1047
FRANZEN, A.	1065
FRANZEN, R.	660
FREDBERG	883
GREEN-KRONEBUSCH	TRAINING
HAINES	360
HEDLUND	663.5
JONES	1082
JONSGAARD	1599
KRISKE	150
LOFTUS	0
MARXHAUSEN	147
MELBOSTAD	602
MOTE	634
NELSON, C.	1936.5
NELSON, T.	1853.5
PETERSON	1684.5
POPE	378
RANDALL	312.5
SCHELL	806.5
SMITH	1124.5
STEPHENS	117
WARREN	204
WIRT	741
ZIEBELL	717.5

**2022 TOTAL INCIDENTS: 454****2022 TOTAL ON CALL COVERAGE: 23,778.75**

2023 LEWISTON AMBULANCE ROSTER

Name	Title
Bambenek, Shaelyn	EMT
Chamberlin, Grace	EMT/DRIVER
Corey, Crystal	EMT
Dahl, Kelly	EMT/DRIVER
Duncanson, Ross	EMT/DRIVER
Essig, Elanda	EMT (RN)
Essig, Matt	EMT/Ambulance Director
Franzen, Adam	EMT/DRIVER
Franzen, Randy	EMR/DRIVER
Fredberg, Erik	EMT/DRIVER
Green-Kronebusch, Elizabeth	EMT (RN)
Haines, Kelly	EMT/DRIVER
Hedlund, Nathan	EMT/Assistant Director
Jones, Brent	EMT/DRIVER
Jonsgaard, Scott	EMT/DRIVER
Kriske, Makenna	EMT
Loftus, Kenny	EMR/DRIVER
Marxhausen, Michelle	EMT/DRIVER
Melbostad, Dion	EMR/DRIVER
Mote, Alan	EMT/DRIVER
Murphy, Madeline	EMT
Nelson, Charayah	EMT/DRIVER
Nelson, Tim	EMR/DRIVER
Peterson, Jeff	EMT/DRIVER
Pope, Heather	EMR
Randall, Lindsay	EMT/DRIVER (RN)
Schell, Miranda	PARAMEDIC/DRIVER
Smith, Jacob	EMT/DRIVER
Stephens, Matt	EMR/DRIVER
Warren, Jake	EMT/DRIVER
Wirt, Liz	EMT/DRIVER (RN)

24- EMT's, 6- EMR/DRIVER's, 1-PARAMEDIC

**Total Members-31**



## **2023 Ambulance Board of Director's**



Medical Director- Dr. Dennis Laudon

Ambulance Director- Matt Essig

Assistant Ambulance Director- Nathan Hedlund

Training Officer- Brent Jones

Financial Officer- Michelle Marxhausen

Membership Liaison- Charayah Nelson

Membership Liaison- Adam Franzen

The Ambulance Board meets on a regular basis to conduct the business of the service and make recommendations to the Lewiston City Council.